



# TC5X Accessories Guide





# TC5X Accessory Ecosystem

Soft Holster  
SG-TC51-HLSTR1-01

Head-Mounted Display  
HD4000

4-Slot Spare Battery Charger  
SAC-TC51-4SCHG-01

Rugged Boot with Hand Strap  
SG-TC5X-EXO1-01

ShareCradle System  
1-slot charge (CRD-TC51-1SCU-01)  
5-Slot Charge Only (CRD-TC51-5SC4B-01)

Attachable Trigger Handle  
TRG-TC51-SNP1-03

USB Charge Cable  
CBL-TC51-USB1-01

Workstation Docking Cradle  
CRD-TC5X-1SWS-01

Bluetooth Headset  
HS3100-OTH

Vehicle Communication Cradle  
CRD-TC56-UVCD1-01

## Also Supports...

Hand straps

Wall Bracket Mounts

Cig Lighter Adapter

Arm Mount

Stylus & Screen Protectors

Audio Adapters and More

\*Items not available in all countries.

## Spare Li-ion Battery

### BTRY-TC51-43MA1-01

PowerPrecision+ Spare Lithium Ion battery, 4.4v. Advanced new battery technology, provides a higher level of intelligence (State of Charge and State of Health) to deliver maximum performance (Single Pack).



Also available as a 10-pack  
PN: BTRY-TC51-43MA1-10

## Charging LED indicators

Off	Battery not charging
Solid Amber	Healthy battery charging
Solid Green	Healthy battery charging complete
Fast Blink Red	Charging error
Solid Red	Unhealthy battery charging or fully charged

## Spare Battery Charging Options

### SAC-TC51-4SCHG-01

TC5X 4-slot battery charger, charges four spare batteries. Includes: Power Supply PWR-BGA12V50W0WW and DC cable CBL-DC-388A1-01. Country specific AC line cord, Rack/Wall bracket sold separately.



### Included Power Supply and DC Cable for Battery Charger:

Power supply for 4-slot battery charger: 100-240 VAC, 12VDC, 4.16A.

(PN: PWR-BGA12V50W0WW)

**Requires:** Country specific AC grounded line cord.



DC cable for Level 6 power supply PWR-BGA12V50W0WW (12 VDC, 4.16A), 1.8 M length. (PN: CBL-DC-388A1-01)

## US AC Line Cord



### 23844-00-00R

US AC line cord, 7.5 feet long, grounded, three wire for power supplies.

## Single Slot ShareCradle



### ShareCradle, Charge & USB Communication

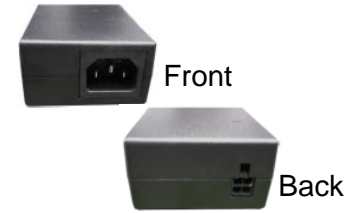
**CRD-TC51-1SCU-01:** TC5X Single Slot Charge/USB ShareCradle Kit. Charges and allows USB communication to one device. Includes PWR-BGA12V50W0WW and DC cable CBL-DC-388A1-01. Country Specific AC Line Cord and 25-124330-01R Micro-USB Cable, Sold Separately.

**KT-TC51-ETH1-01:** USB-Ethernet Adapter kit for single slot ShareCradle. Includes Ethernet module (MOD-MT2-EU1-01) to provide Ethernet communication (10/100 Mbps) and a housing bracket to secure the Ethernet module to cradle.

#### Notes:

1. All TC5X cradles accommodate devices with or without the rugged boot.
2. Each cradle cup has an insert that must be removed prior to inserting the TC5X device with Rugged Boot attached.
3. Spare cradle cups are available as service spare parts.

### Included with Single-Slot cradle



Power supply for single-slot cradle: 100-240 VAC, 12VDC, 4.16A.  
(PN: PWR-BGA12V50W0WW)  
**Requires:** Country specific AC grounded line cord.



DC cable for power supply  
PWR-BGA12V50W0WW.  
(12 VDC, 4.16A) 1.8m length.  
(PN: CBL-DC-388A1-01)

### Additional accessories for Single-Slot cradle



#### 23844-00-00R

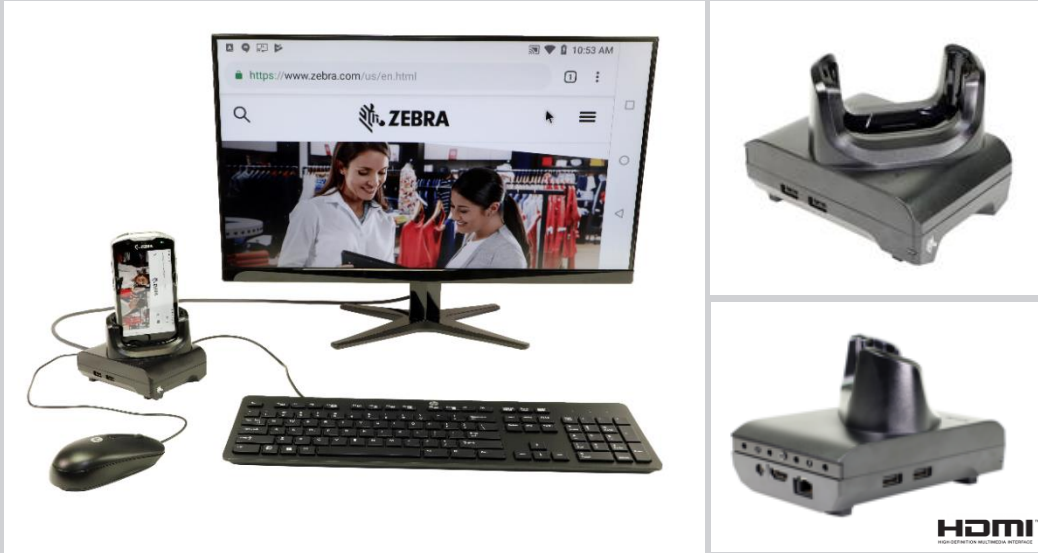
US AC line cord, 7.5 feet long, grounded, three wire for power supplies.



#### 25-124330-01R

Micro-USB to USB Cable for single slot cradle communication.

## Workstation Docking Cradle

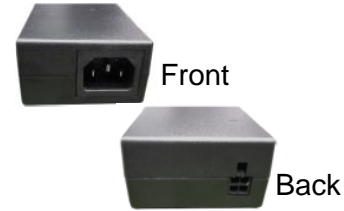


The TC5X Workstation Docking Cradle is an enhanced single-slot charging cradle with additional ports for HDMI, Ethernet, and 4 USB ports for Keyboard, Mouse, and spares, that enables a TC5X device to be used as a workstation computer when connected to an HDMI monitor, keyboard and mouse. The Workstation Docking Cradle supports all TC5X Mobile Computers including the TC51, TC56, TC52 and TC57. It also includes a Kensington port to secure the cradle to a desk location or, alternatively, the cradle can be locked down to a desktop, shelf or rack with screw-down options.

**CRD-TC5X-1SWS-01:** TC5X Workstation Docking Cradle Kit with Std Cup, HDMI, Ethernet and multiple USB Ports. Kit includes Cradle (CRD-TC5X-1SWS1-01), power supply (i.e. PWR-BGA12V50W0WW) and DC cable (i.e. CBL-DC-388A1-01). Country specific AC line cord sold separately.

\* Note: Software updates may be required to support functionality including the DisplayLink™ Presenter driver available on the Google Play™ store, and the appropriate Zebra BSP or LG updates.

## Included with Workstation Cradle Kit



Power supply for single-slot cradle: 100-240 VAC, 12VDC, 4.16A.  
(PN: PWR-BGA12V50W0WW)  
**Requires:** Country specific AC grounded line cord (not included).



DC cable for power supply  
PWR-BGA12V50W0WW.  
(12 VDC, 4.16A) 1.8m length.  
(PN: CBL-DC-388A1-01)

## Additional accessories



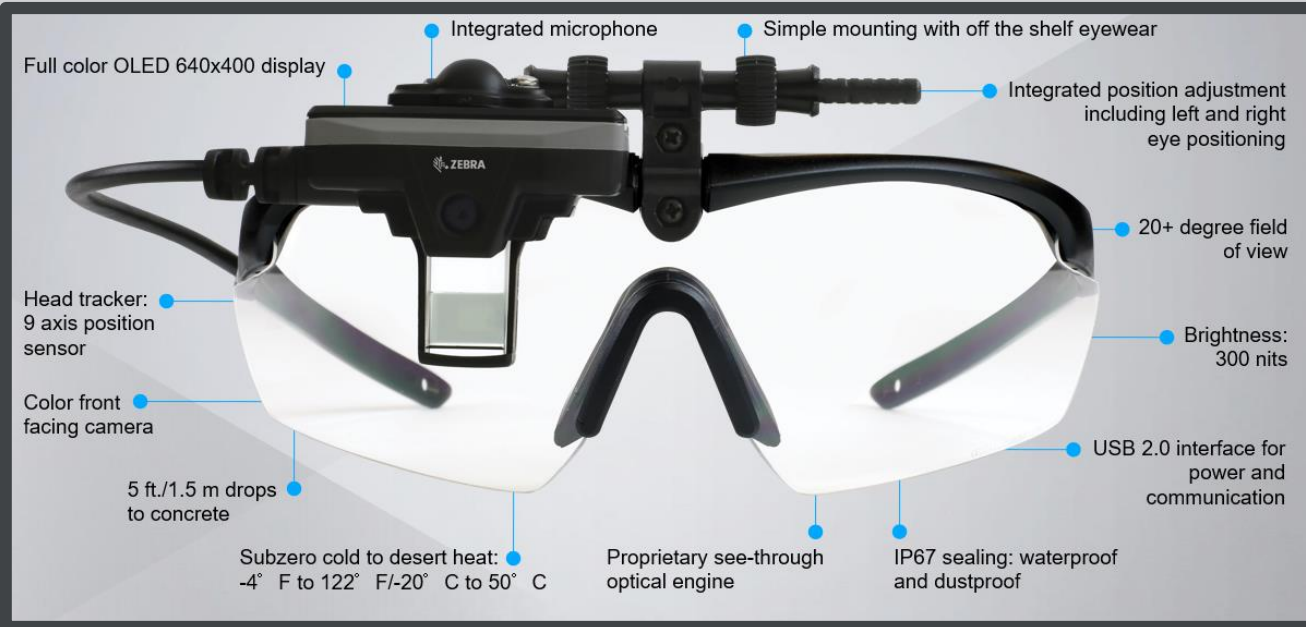
**23844-00-00R**

US AC line cord, 7.5 feet long, grounded, three wire for power supplies.

### Notes:

1. All TC5X cradles accommodate devices with or without the rugged boot.
2. Each cradle cup has an insert that must be removed prior to inserting the TC5X device with Rugged Boot attached.
3. Spare cradle cups are available as service spare parts.
4. This cradle does not include a micro-USB port.

## HD4000 Head-Mounted Display



### USB-tethered connection to compatible Zebra Mobile Computers

- The HD4000 connects to compatible Zebra mobile computers via USB, giving a real time, crystal clear, see-through display in the wearer's field of view.
- The HD4000 optical module is mounted on a pair of safety glasses with a uniquely configurable adjustment mechanism, enabling users with a range of ergonomic requirements to position the display in the most effective manner.
- There are 2 models, one with front facing camera (**HD4000-P-GA1**) and one without (**HD4000-PC-GA1**).
- The HD4000, being USB-tethered, takes it's power, wireless connectivity, processing power and storage from the host device.

**Frame Mount:** An additional glasses frame/mount (**HD4000 -GA1-FM**) is also available to enable additional users to share a single optical module.

**Key Target Use Cases:** Warehouse picking and replenishment, Field Service and maintenance, Manufacturing assembly and kitting, Post & Courier sortation.

## Compatible Zebra Mobile Computers



### TC51/56 & TC52/57

USB cable required: **CBL-TC5X-USBHD-01**.  
HD4000 (GA) to TC5X (USB C female to TC5X USB charging/comms connector)



### TC70/75 & TC72/77

USB cable required: **CBL-TC7X-USBHD-01**  
HD4000 (GA) to TC7X (USB C female to TC7X USB charging/comms connector)



### WT6000

USB cable required: **CBL-NGWT-USBHD-01**.  
HD4000 (GA) to WT6XXX (USB C female to WT6K NG USB Male connector)

## Options For Prescription Glasses Wearers

Additional options will be available shortly to suit wearers of prescription glasses.

Estimated availability: Late Q1 2020

- The HD4000 optical modules will be common with the non-prescription glasses versions.
- No power cords are required for the HD4000 as it is USB-powered.

### Notes:

1. Cables for additional Zebra mobile computers will be introduced on a case by case basis.
2. Additional cable retention sleeves are available as packs of 5 (**HD4000-GA1-CS5**)

## 5-Slot ShareCradle



**CRD-TC51-5SC4BC-01:** TC5X 5-Slot Charge Only ShareCradle with 4-Slot Spare Battery Charger, charges up to 4 devices and up to 4 spare batteries. **Does Not Include** power supply or DC cable.

**CRD-TC51-5SC4B-01:** TC5X 5-Slot Charge Only ShareCradle kit with 4-Slot Spare Battery Charger, charges up to 4 devices and up to 4 spare batteries. Includes power supply PWR-BGA12V108W0WW and DC cable CBL-DC-381A1-01.

**CRD-TC51-5SCHG-01:** TC5X 5-Slot Charge Only ShareCradle kit, charges up to five devices. Includes power supply PWR-BGA12V108W0WW and DC cable CBL-DC-381A1-01.

**CRD-TC51-5SETH-01:** TC5X 5-Slot Ethernet ShareCradle kit, charges up to five devices and provides Ethernet communication. Includes power supply PWR-BGA12V108W0WW and DC cable CBL-DC-381A1-01.

**Notes:**

1. All TC5X cradles accommodate devices with or without the rugged boot.
2. Each cradle cup has an insert that must be removed prior to inserting the TC5X device with Rugged Boot attached.
3. Spare cradle cups are available as service spare parts.

## Included with 5-Slot ShareCradle Kits



Front



Back



Power supply for 5-slot cradle: 100-240 VAC, 12VDC, 9A. (PN: PWR-BGA12V108W0WW)  
**Requires:** Country specific AC grounded line cord (sold separately).

DC cable provides power from the power supply to 5-slot charge-only and Ethernet cradles.  
(PN: CBL-DC-381A1-01)

## Country specific AC line cord sold separately



**23844-00-00R**

US AC line cord, 7.5 feet long, grounded, three wire for power supplies.

## Mount Options for Multi-Slot Cradles



### MAXIMUM DENSITY

#### RACK MOUNTED SOLUTION:

The Rack/Wall Mount Bracket has been optimized to work on a standard 19-inch IT rack. The brackets can also be configured in different angles for maximum flexibility.

#### Compatible with all multi-slot cradle options:

**CRD-TC51-5SC4BC-01:** TC5X 5-Slot Charge Only ShareCradle with 4-Slot Spare Battery Charger, charges up to 4 devices and up to 4 spare batteries. **Does Not** include power supply or DC cable.

**CRD-TC51-5SC4B-01:** 4-Slot Charge Only ShareCradle with 4-Slot Spare Battery Charger, charges up to 4 devices and up to 4 spare batteries on the same cradle. (Includes Power supply and DC cable)

**CRD-TC51-5SCHG-01:** 5-Slot Charge Only ShareCradle, charges up to five devices. (Includes Power supply and DC cable)

**CRD-TC51-5SETH-01:** 5-Slot Ethernet ShareCradle, charges up to five devices and provides Ethernet communication. (Includes Power supply and DC cable)

## Rack/Wall Bracket for Multi-Slot ShareCradle



### BRKT-SCRD-SMRK-01

Rack/Wall mounting bracket is designed to help customers install any Single-Slot or Multi-Slot ShareCradle on a wall or a 19" IT rack. The bracket also enables the installation of up to four 4-Slot Spare Battery Chargers together on a wall or standard 19" IT rack.

## 4-slot Battery Charging Solution, Mounted on Bracket

### CBL-DC-523A1-01

DC "Y" Cable for running two **SAC-TC51-4SCHG-01** battery chargers with a single Level VI power supply PWR-BGA12V108W0WW

### PWR-BGA12V108W0WW

Power supply for multi-slot cradle: 100-240 VAC, 12VDC, 9A. **Requires:** Country specific AC grounded line cord.

\* 2 DC Cables and 2 Power supplies are required to utilize solution shown.





## Arm Mount

**For Retail Use Only**

### SG-TC51-WMADP1-01 & SG-TC51-WMADP1-02

TC5X arm mount with adjustable strap. Enables hands-free scanning when paired via Bluetooth with Zebra cordless ring scanners. Rotatable to either portrait or landscape mode. Can be used with or without the rugged boot. Strap lengths: -01 sku is 191 mm; -02 sku is 265 mm.



## Rugged Boot

### SG-TC5X-EXO1-01

TC5X Rugged Boot and Hand strap. Provides additional protection to the device and allows user to attach a trigger handle. (Not recommended for healthcare devices)

\* Custom Colors available through Custom Request



# Attachable Trigger Handle

## TC5X Attachable Trigger Handle



### KT-TC51-TRG1-01

TC5X Snap-On Trigger Handle and Rugged Boot Kit. Trigger handle easily attaches to the rugged boot and is easily removable to access the battery. Trigger handle includes a tether point for a wrist tether. Wrist Tether (SG-PD40-WLD1-01) is sold separately.



### TRG-TC51-SNP1-03

TC5X Snap-On Trigger Handle. Requires TC5X rugged boot (sold separately or included in above kit KT-TC51-TRG1-01). Wrist Tether and rugged boot sold separately.

\* Trigger Handle accessory is not intended for use with the TC51-HC Healthcare product.

## Trigger Handle Service Plan

The TC5X trigger handle accessory provides users with significant flexibility as they adapt the TC5X device to different operations within their retail environment. The TC5X trigger handle accessory is considered a consumable item which may need to be replaced during the life of a TC5X device. Therefore, Zebra highly recommends the purchase of a Zebra trigger handle service plan.

\* For dedicated high-intensity scanning operations, customers are urged to consider Zebra mobile devices with integrated gun handles such as the MC33 and TC8000.

OPT-TRGMNT-3	3-Year Zebra OneCare Comprehensive Trigger Maintenance
OPT-TRGMNT-5	5-Year Zebra OneCare Comprehensive Trigger Maintenance

## Hand Strap



### SG-TC51-EHDSTP1-03

TC5X Replacement Hand strap for devices configured with a rugged boot (3-pack).

### SG-TC51-BHDSTP1-03

TC5X Basic Hand strap kit. Allows TC5X devices without a rugged boot to be configured with a hand strap (3-pack). For use with TC5X WLAN configurations only.



## Soft Holster

### SG-TC51-HLSTR1-01

TC5X soft holster for vertical orientation with open bucket design for easy insertion and removal. Features adjustable straps to accommodate handstrap, rugged boot and trigger handle configurations.



## Stylus



### SG-TC7X-STYLUS-03

Stylus with coiled tether 3-pack. Made of conductive carbon-filled plastic material, optimized for enterprise durability.

## Screen Protector

### KT-TC51-SCRNP1-01

TC5X Tempered Glass Screen Protector 3-pack.



## Rugged Charge Cable

### CBL-TC51-USB1-01

TC5X Rugged USB/Charge Cable. Accommodates TC5X with and without rugged boot.



## Vehicle & Wall Charger – Power Supply

### PWR-WUA5V12W0XX

Power Supply-100-240 VAC, 5 V, 2.5 A with country specific plugs.



### CHG-AUTO-USB1-01



CIGARETTE TO USB ADAPTER  
Charges the TC5X and a printer via the vehicle lighter power adapter.

Country	Power Supply Part Number
United States	PWR-WUA5V12W0US
Great Britain	PWR-WUA5V12W0GB
Europe	PWR-WUA5V12W0EU
Australia	PWR-WUA5V12W0AU
China	PWR-WUA5V12W0CN
Brazil	PWR-WUA5V12W0BR
Korea	PWR-WUA5V12W0KR
India	PWR-WUA5V12W0IN

## USB Adapter

### ADPTR-TC56-USBC-01

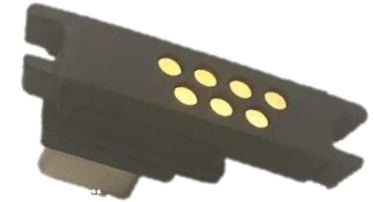
Provides charging and communications. Snaps on to bottom of TC5X device. Can be used with any consumer grade USB-C cable. Plugs into any standard wall adapter or USB port. USB-C cable sold separately



## Spare I/O Connector

### ADP-TC51-RGIO1-03

Spare/replacement TC5X 7-pin I/O connector. 3-pack



## Audio Cables Adapters

### CBL-TC51-HDST25-01

2.5MM Female to 3.5MM Male Headset Adapter Cable.



### CBL-TC51-HDST35-01

3.5MM Collared Female to 3.5MM Male Headset Adapter Cable.



## Rugged Headset

### HS2100-OTH

HS2100 Rugged Wired Headset Over-The-Head Headband includes HS2100 Boom Module and HSX100 OTH Headband Module



## Headset

### HDST-35MM-PTVP-01

Over the ear headset with mic and PTT button. Requires 3.5MM adapter cable CBL-TC51-HDST35-01 (sold separately).



## Bluetooth Headset

### HS3100-OTH

HS3100 Rugged Bluetooth Headset Over-The-Head Headband includes HS3100 Boom Module and HSX100 OTH Headband Module



## ProClip CLA included Charge Only Kit Vehicle Cradle

### 3PTY-PCLIP-241389

TC5X Charge-Only Drop-In Vehicle Cradle



These are light duty quick and easy, one handed, top drop in style cradles that are designed to be used in the vertical (portrait) position, not recommended in the landscape mode.

Boot #SG-TC5X-EXO1-01) is required for proper fit and protection

## Ram Suction Cup Mount

### RAM-B-166U

RAM Twist Lock Suction Cup with Double Socket Arm and Diamond Base Adapter; Overall Length: 6.75". Compatible with both charge and communications vehicle cradles.



## USB Charge Only Vehicle Cradle

### CRD-TC56-CVCD2-02

TC5X Charge-Only Drop-In Vehicle Cradle  
Mounting hardware and power cable sold separately



- USB Power Cable: CBL-TC5X-USBC2A-01
- CLA: CHG-AUTO-USB-01



CHG-AUTO-USB1-01

## ProClip Communication Enabled Vehicle Cradle



### CRD-TC56-UVCD1-01

- TC56 Communication Enabled Vehicle Cradle
- Power supplies sold separately (hardwire and CLA)
- Zebra USB Hub Sold separately – **SHARE-USBH-01**
- **Boot #SG-TC51-EXO1-01) is required for proper fit and protection**

USB IO Hub (15 pin D Connector) provides USB Charge & Communication



## Zebra CLA Power Supply Cable

### CHG-AUTO-CLA1-01

12/24V

CLA (Cigarette Light Adapter) Auto Charge Cable for the vehicle cradle. Does **not** work without Cradle (sold separately).



## Zebra Hardwire Auto Charge Cable

### CHG-AUTO-HWIRE1-01

12/24V

Hardwire Auto Charge Cable for the vehicle cradle. Allows for installation into Vehicle's fuse box. Does **not** work without Cradle (sold separately).







# Country Specific AC Line Cord Options

Country	Three Wire AC Line Cord
Abu Dhabi	50-16000-220R: 1.8M long, CEE 7/7 plug.
Australia	50-16000-217R: 1.9M long, AS 3112 plug.
Bolivia	50-16000-220R: 1.8M long, CEE 7/7 plug.
Brazil	50-16000-727R: 18AWG, 250V, 16A, BR (3w).
China	50-16000-217R: 1.9M long, AS 3112 plug. 50-16000-257R: 1.8M long, IEC 60320 C13 plug.
Dubai	50-16000-220R: 1.8M long, CEE 7/7 plug.
Egypt	50-16000-220R: 1.8M long, CEE 7/7 plug.
Europe	50-16000-220R: 1.8M long, CEE 7/7 plug.
Hong Kong	50-16000-219R: 1.8M long, BS1363 plug.
India	50-16000-669R: 1.9M long, BS 546 plug.
Iran	50-16000-220R: 1.8M long, CEE 7/7 plug.
Iraq	50-16000-219R: 1.8M long, BS1363 plug.

Country	Three Wire AC Line Cord
Israel	50-16000-672R: 1.9M long, S132 plug.
Italy	50-16000-671R: 1.8M long, CIE 23-16 plug.
Japan	50-16000-218R: 1.8M long, NEMA 1-15P plug.
Korea	50-16000-220R: 1.8M long, CEE 7/7 plug. 50-16000-256R: 1.8M long, CEE7/7 plug.
Malaysia	50-16000-219R: 1.8M long, BS1363 plug.
New Guinea	50-16000-217R: 1.9M long, AS 3112 plug.
Russia	50-16000-220R: 1.8M long, CEE 7/7 plug.
Singapore	50-16000-219R: 1.8M long, BS1363 plug.
UK	50-16000-219R: 1.8M long, BS1363 plug.
US	23844-00-00R: 7.5 feet long. 50-16000-221R: 1.8M long, USA NEMA 5-15P.
Vietnam	50-16000-220R: 1.8M long, CEE 7/7 plug.